

an Triantán, Station Rd

Landscape Design Statement

01/25

B S L A
Bernard Seymour Landscape Architects

PROJECT DESCRIPTION

The construction of 30 social housing units to include:

- 5no. 3 bedroom two storey duplex apartments;
- 1no. 3 bedroom three storey house;
- 2no. 2 bedroom two storey houses;
- 2no. 2 bedroom single storey apartments;
- 4no. 2 bedroom 3 person single storey apartments;
- 6no. 2 bedroom two storey duplex apartments;
- 10no. 1 bedroom single storey apartments;

The construction of ancillary structures to include:

- ESB substation;
- Switchroom;
- Secure cycle storage rooms;

Associated site works to include:

- Demolition of 2no. existing cottages and associated ancillary structures on Station Road;
- Erection of new boundary treatment to south, east and north boundaries;
- New vehicular and pedestrian entrance from Station Road;

Provision of:

- 26no. vehicle parking spaces
Of which 6no. provided with EV charging points
- 54 no. residents bicycle parking spaces
Of which 4no. suitable for adapted cycles / cargo bikes
- 16no. visitor bicycle parking spaces
Of which 4no. suitable for adapted cycles / cargo bikes

New landscaping, internal vehicular and pedestrian shared surface route, public lighting, site drainage works, ancillary site services and development works above and below ground.

CONTEXT

The site lies approximately 300m to the north-east of Kildare town centre and approximately 500m from Kildare Train Station. Site access is proposed on Station Rd. Nearby landscape amenities include a local playground on Station rd and a large green space on Campion Crescent. The site is a few minutes walk from Kildare market Square. The site is an urban infill location, the site's is bound to backgardens on Station Rd, Dara Park & Campion Crescent.



LANDSCAPE MASTERPLAN



OPEN SPACE STRATEGY

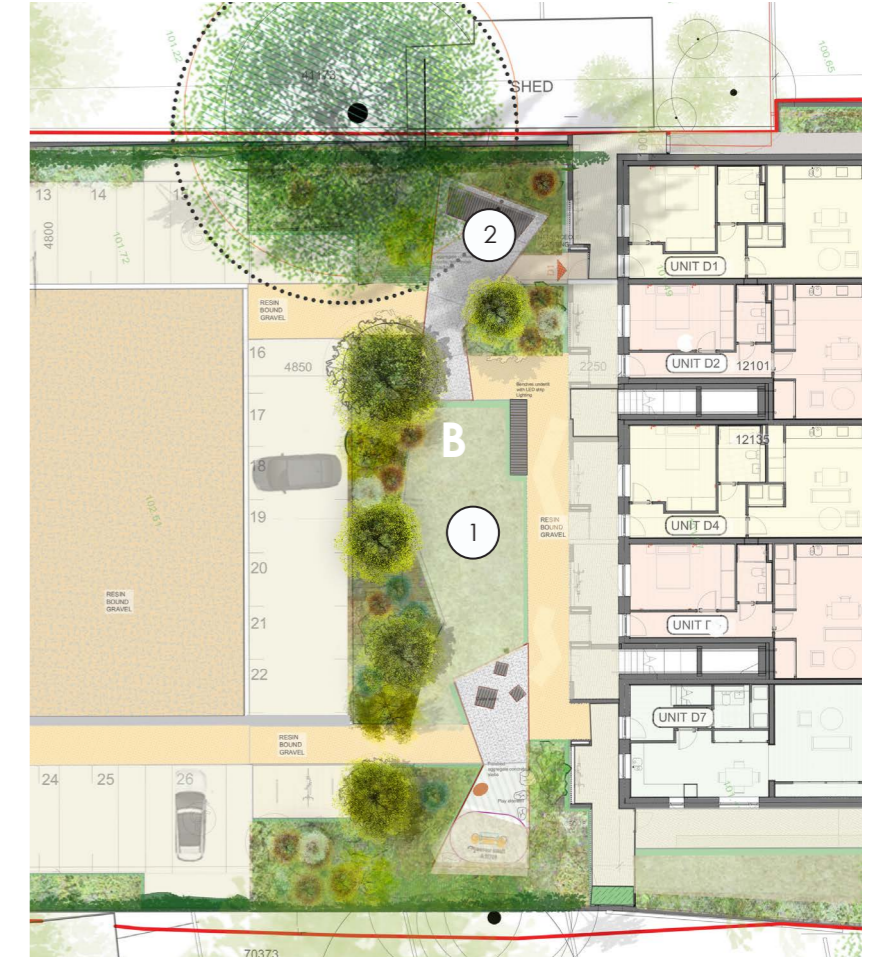
The open space is mainly consolidated to two zones that includes play provision, informal lawn spaces & ample seating opportunities.

A: Triangular Space

The approach is to create a small enclosure by wrapping the main lawn space in a raingarden which will hold a series of light-canopied trees and multi-stemmed deciduous shrubs, to give a soft screening, while still allowing for light & visual penetration. Hardstanding areas and pathways are integrated carefully into the lawn space to provide ease of access throughout and opportunities for seating.

B Square Space

The primary feature of the courtyard space is a lawn surrounded by planting on three sides. Integrating into the planing are areas of hard standing to accommodate bespoke seating features and play elements for young children.



Open Space:
610m² (12.1%)

Public Open Space is provided at a quantum totalling 610 sq.m across the development site, making up over 12% of the site area of 5030m²



an Triantán



Inner grassy area, enclosed in a light canopy



Wide benches of polished concrete, with inset for strip lighting

PLAY STRATEGY

Play equipment is integrated into the landscape surrounded by planting beds, either side of the proposed lawn for free play. All play equipment proposed is made from Robinia Wood on grass matting safety surface. None of the play equipment contains any moving parts making it robust and easy to maintain.

The scheme benefits from a playground across Station Rd, so play equipment was chosen to benefit toddlers and young children in the hope that the older residents with grandchildren might use the space in close proximity to their house to play with their grandkids.



- ① Play Boulders (2+ years)
 - ② Small See saw (2+ years)
 - ③ Grass lawn - kickabout area
 - ④ Seating area
 - ⑤ Play Sculpture
- Play equipment
 - Informal Play (Lawn) (4+ years)



Play boulders



Grass Matting Safety Surface



Robinia Wood Play Equipment
Richter Small see saw



Play Sculpture 'turtle'
Richter 4.64010 - 4.64070

PLANTING STRATEGY



The aim for the planting strategy is to provide a number of semi-shade herbaceous beds where the planting where species proposed within the communal spaces are designed to add variety, colour and interest throughout the entire year. The planting proposal for this site is very biodiversity centred, with many species chosen to extend the flowering season. Many of the proposed planting is a mix of species proposed in the All-Ireland Pollinator Plan.

The trees proposed include large/medium trees like Liquidambar styraciflua & Gleditsia. These trees have a light canopy and will provide the development with a spectacular colour throughout the year. Additionally, multi stems form the basis of the next layer of canopy, to provide a light screening around the open space areas, while still allowing light and some line of sight. A mix of fruiting trees like Malus & Prunus to aid wildlife and also provide a beautiful flower.

The Planting strategy is largely broken into three categories: Refer to Planting plan for full breakdown

- Planting Type A - Herbaceous planting, primary mix
- Planting Type B - Herbaceous planting, low planting mix
- Planting Type C - Herbaceous planting, back gardens mix
- Climbing plants

Primary Herbaceous planting mix

- Bergenia bressingham white
- Daphne jacqueline postill
- Tulbaghia violacea
- Eryngium giganteum
- iris germanica wine and roses
- Erigeron karvinskianus
- Thalictrum delavayi
- Sedum purple emperor
- Miscanthus purpurascens
- Pevroskia atriplicifolia
- Agapanthus black buddhist
- Agastache apricot sprite
- Phlomis tuberosa
- Foeniculum vulgare purpureum
- Helleborus corsicus
- Scilla hyacinthoides
- Galtonia candicans
- Tulipa ballerina
- Narcissus Thalia
- Lilium Henryi

Refer to Planting Plan for more details.

Low Planting Mix

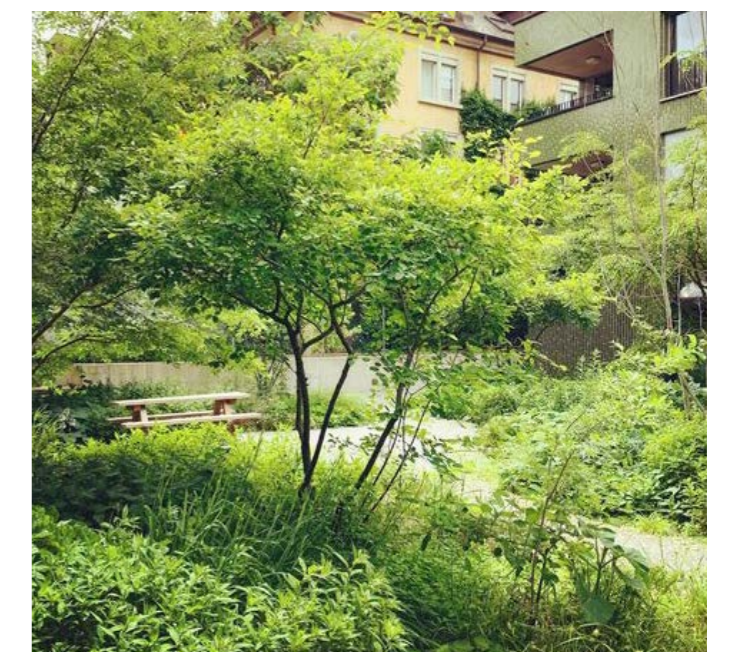
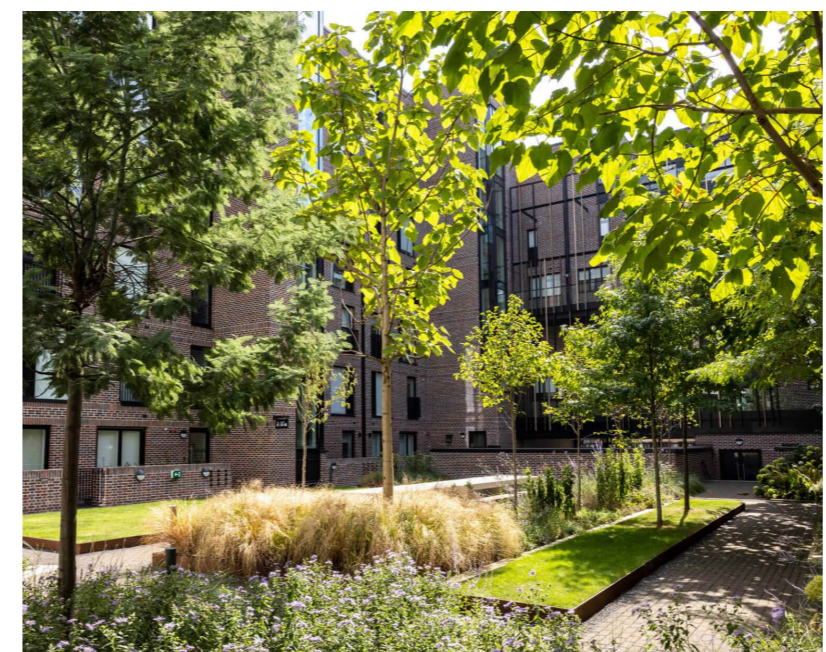
- Vinca minor
- Fragaria vesca
- Anemone Blanda
- Ajunga reptans
- Convallaria majalis

Climbing Plants:

- Parthenocissus engelmannii
- Clematis montana Marjorie
- Hedera hibernica
- Hydrangea petiolaris
- Passiflora caerulea
- Clematis armandii
- Trachelospermum jasmonoides

Back Garden Mix

- Dryopteris filix-mas
- Polystichum munitum
- Helleborus foetidus
- Iris sibirica,
- Iris pseudoacorus
- Vinca minor
- Carex pendula



PLANTING STRATEGY

Tree species proposed within the communal spaces are designed to add variety, colour and interest throughout the entire year, with a mix of native & non-native species. Refer to planting plan for position of each species.

Street Trees & Clearstems



Quercus coccinea



Liquidambar styraciflua

Multi Stems



Malus comtesse de paris



Betula Bendula



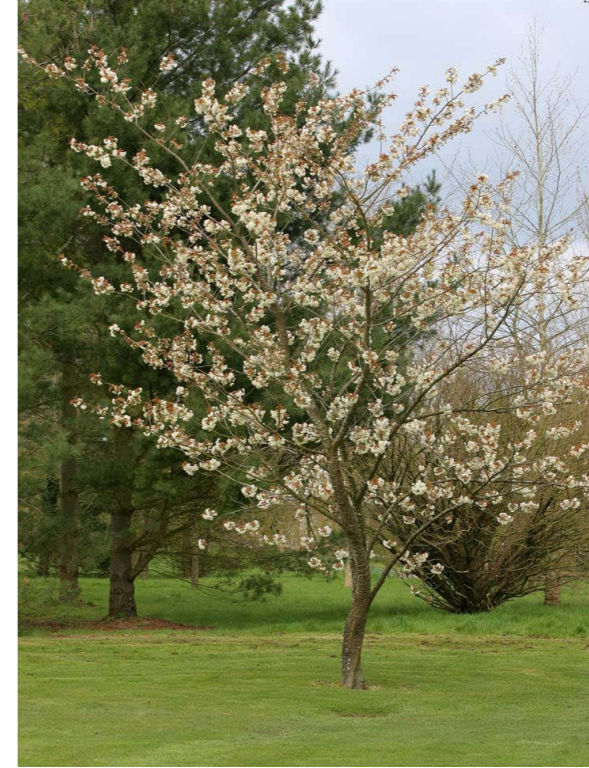
Gleditsia Triacanthos



Paulownia tomentosa



Amelanchier lamarckii



Prunus avium

HARD LANDSCAPE



1 Roads - ResinBound - permeable
Capel St. Dublin (BSLA Project) where resin bound is used on a busy urban street to facilitate delivery HGVs, pedestrians and cyclists.



2 Footways - Resin bound - permeable



3 Front Yards & Back Gardens: Tobermore Arthro paving (impermeable)



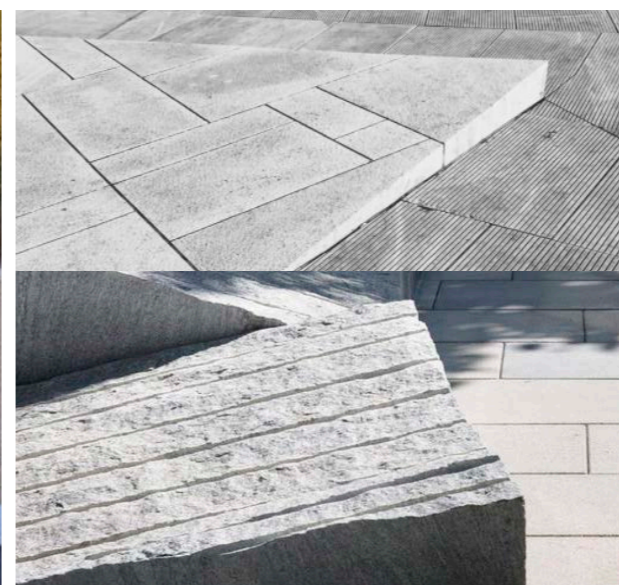
4 Open space: Feature Paving inset in Resin



5 Carparking spaces: Resinbound, wide kerb edge to front



6 Granite Feature Corner with placemaking signage inscription



7 Concrete hard standing area



BOUNDARIES



- Masonry Wall
- Raised Bed against wall
- Climbing Plants on tension Wire



2000mm high Blockwork wall with concrete coping - to arch specification



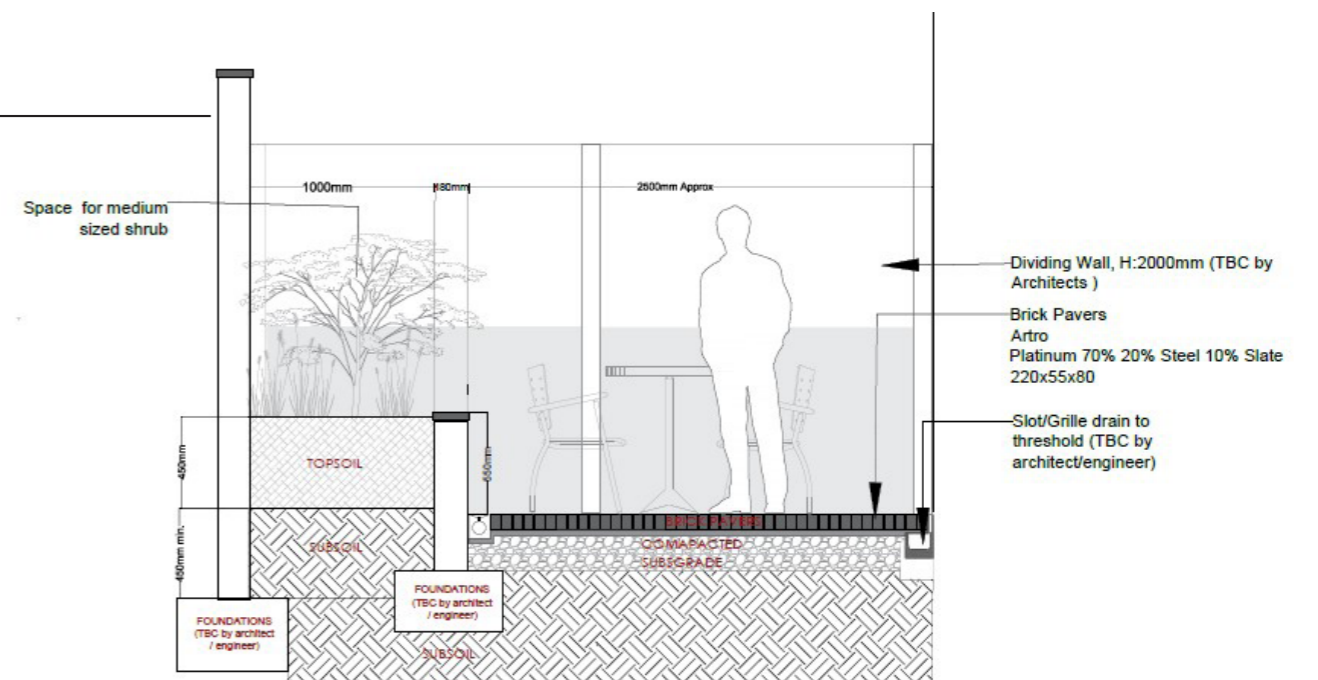
Garden dividers: 2000mm high of proprietary precast concrete post and plank construction, with timber panels above 1000mm. - to arch



Raised beds in back gardens



Climbing plants & tension wire against walls in carpark - refer to planting plan



Raised Bed back garden detail